



# UNITED STATES LIGHTHOUSE SOCIETY

9005 Point No Point Rd. NE . Hansville, WA 98340 . Phone: 415-362-7255 . [www.uslhs.org](http://www.uslhs.org)



## STAMP FLASHES

THE OFFICIAL NEWSLETTER OF THE USLHS PASSPORT CLUB



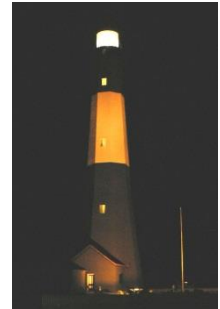
Number 37 - May, 2020

Website: [www.uslhs.org/fun/passport-club](http://www.uslhs.org/fun/passport-club)

Email: [passportclub@uslhs.org](mailto:passportclub@uslhs.org)

### Keep the Light Shining

If ever we needed light for guidance in rough waters, we certainly need it in these uncertain times. All of us at the U.S. Lighthouse Society hope you are safe, healthy and looking forward to the time again when we are all able to get outdoors and resume our visits to lighthouses. Our volunteers have been busy collecting information about the availability of stamps so that our website will be up to date when we no longer have to be concerned with social distancing. However, information about when facilities will be open may not reflect the actual dates for this year. When you decide to venture out looking for stamps, you are strongly urged to check websites or call to make sure they will be open. Also, if you have reached out for stamps via mail, please be patient. While some will respond immediately, others will not until they are back in operation.



### A Cure for Lighthouse Withdrawal

### *U.S. Lighthouse Society News*

If you are having lighthouse withdrawal due to the current pandemic restrictions, we suggest you listen to two recent USLHS podcasts covering all aspects of the passport stamp program. Jeremy D'Etremont highlighted the program on two of his recent "Light-Hearted" podcasts. First, in Part 1, he discusses the origins and growth of the program with Director, Skip Sherwood. In addition, he talks to Scott Walbert, one of the valuable regional stamp volunteers, about what it takes to keep the program information up to date. In Part 2 he interviews four of the top stamp collectors in the Hall of Fame including, James Hill, Mac McFarland, Sharon Mills and Al King, all of whom have great stories about their extensive stamp hunting adventures. To listen to these podcasts, go to the USLHS website ([uslhs.org](http://uslhs.org)) and click on "News" from the top menu. Here there are links to the two podcast as well as some interesting historical videos, also narrated by Jeremy. At the top of the page on the right you can subscribe to receive future announcements about happenings in the lighthouse community, as well as new podcasts and videos.

### New Format for Listing Stamp Locations

Over time, as stamps were added to the website, we failed to utilize a standard format which would have made navigating the list a bit easier. To correct this, we now are listing all stamps in the same manner, which includes more specific information about the availability of multiple stamps for the same lighthouse. If a listing includes: Stamp design #1, Stamp design #2, etc. this indicates that two *different* stamps are available at the same or different locations. Stamp location A, Stamp location B.... indicates that the *same* stamp design is available in different

locations. Also, information about availability via mail, yes or no, is included for all stamps. When making these requests be sure and follow the instructions for each individual lighthouse. We hope that you will find this new format easier to use and understand. As always, if you have information which would enhance an entry, please send us an email.

## Restated Policy on Acceptable Passport Entries

Over the years we have worked to simplify the policy regarding which entries are acceptable in a passport book. While a little more detail is given on the website, the bottom line is:

- If the stamp is on the list of participating locations, it counts.
- If it is NOT on the list but depicts AND identifies the lighthouse, it counts. You should write in your passport where the stamp was obtained.
- Only photos of domestic and international lighthouses ON the list count.
- Any exceptions to these policies are included with individual site listings.

If you have a question about any stamp, the best thing to do is to send an image of it to the Passport Club website ([passportclub@uslhs.org](mailto:passportclub@uslhs.org)). As we uncover new acceptable stamps, they will be added to the list.

## Updated “Fun” Pages

In addition to the information about passport stamps, the “Fun” section of the USLHS website also provides up to date information about lighthouse cruises and excursions, challenges and events as well as where you can stay at a lighthouse. Thanks to some hard work by volunteers Scott & Diane Walbert and Andy Robinson, these components are now up to date and contain additional information. Lighthouse cruises and challenges provide great opportunities to fill up those passports while spending the night at a lighthouse is a once in a lifetime experience. Please note that much of the information on these pages is subject to change based on yet to be determined Covid-19 guidelines for their opening and operation.



## New Stamps

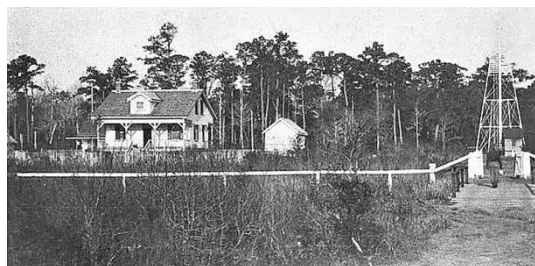
### Cape Enrage Lighthouse (New Brunswick)

True to its name, the waters off Cape Enrage on the Bay of Fundy become particularly violent (i.e. enraged) when the tide exposes a large reef. The lighthouse, established in 1838, was the first in the Upper Bay of Fundy. Complete with a zip line, it's a great place to view the massive tidal range of the Bay. They now have a newly designed USLHS stamp thanks to the efforts of collector James Hill, who found that they had a very small, almost unrecognizable stamp and convinced them to have a new one made.



### Lightship Relief (California)

We have encountered some difficulties in having a stamp available for the Relief Lightship, located at Oakland's Jack London Square. Since the facility does not have regular open hours, we have created a stamp with a new design which can be obtained by mail after you view the lightship. Check the website listing for instructions.



### Bloody Point Range Lighthouse (SC)

The original Bloody Point Front Range light on Daufuskie Island resembles a keeper's house and a light was shone from the second floor dormer. When lined up with the rear range tower it helped guide ships into the Savannah River channel. When erosion

threatened the house, it was relocated to a point near the rear tower where it became the rear range light. This may be the only lighthouse that served as both a front and rear light in the same location. A new stamp which depicts both the front range and original rear range light is now available at the Bloody Point Lighthouse & Museum.

### **Bar Harbor Whale Watch (Maine)**

In preparation for their 2020 Grand Slam US/Canada 18 lighthouse tour, Bar Harbor Whale watch has added 12 new stamps to those available for this and other future cruises. The designs all carry the BHWW initials to distinguish them from those available elsewhere. The cruise is scheduled for late July and will view a number of Canadian lighthouses along the way including Gannet Rock and the lighthouses of Grand Manan Island. Check their website for a complete list of cruises, dates and lighthouses visited.



### **River Run Tours, Maine**

River Run Tours is a new addition to our list of lighthouse cruises that offer Society members a discount on their tours of up to 10 lighthouses on the mid-coast of Maine. Stamps are available for all of the lighthouses they view on one or more of their trips. Donations made for the stamps are passed on to a local lighthouse organization. For complete information visit their website: [riverruntours.com](http://riverruntours.com)

### **Other Existing Sites with New Stamp Designs**

Port Isabel, Texas  
New Point Comfort, Virginia  
Old Point Comfort, Virginia  
Fishing Battery, Maryland  
Huntington Harbor, New York



### **New Hall of Fame**

As we reported in our last newsletter, additions to and changes in the Hall of Fame listings are being uploaded directly to the website. Check out the new format, which recognizes the collectors who are at the top levels of achievement. A new level has been added, named after one of the Seven Wonders of the Ancient World, the Pharos (Lighthouse) at Alexandria. This recognizes individuals who have completed more than 11 passports or 660 entries. Congratulations are in order for James Hill who has now accumulated 1,260 entries in 21 books - all stamps! I have seen copies of all of his stamps and it is truly an impressive collection. We are still working on creating the special patch that will be awarded to all who reach this level.